



**105 Lawn Drive**  
**Smyrna, DE 19977**  
**(302) 653-5229 TTY 711**  
[info@hdcweb.com](mailto:info@hdcweb.com)

**RENTAL INFORMATION:**

71 Affordable Housing, General Occupancy Apartments  
**2 Bedroom Apartments (1 full and 1 ½ Bath, 1000 square ft.)**  
 50% Income Limit 2BR Apartments at \$560 per month  
 60% Income Limit 2BR Apartments at \$630 per month

RENT INCLUDES WATER, SEWER AND TRASH REMOVAL  
 Section 8 Vouchers Accepted

**AMENITIES INCLUDE:**

- |  |                                  |
|--|----------------------------------|
| Central Air-Conditioning                           | On-Site Building Management      |
| Wall-to-Wall Carpeting                             | On-Site Professional Maintenance |
| Walk-in Closet                                     | 24-Hour Emergency Maintenance    |
| Spacious Floor Plans                               | Laundry Facilities On-Site       |
| Fully Equipped Kitchen<br>with Dishwasher & Pantry | Ample Off-Street Parking         |
| Tobacco Free Community                             | No Pets                          |

**INCOME LIMITS:**

Smyrna Gardens Apartments is an affordable rental community and maximum and minimum income limits apply for all rental opportunities. The maximum income levels are based on a percentage of the Delaware State median income by household size. When applying for residency, applicants will be required to complete forms pertaining to their household composition, gross household income (before any deductions) and your income from assets.

**MAXIMUM INCOME LIMITS:**

	<b>1 person</b>	<b>2 people</b>	<b>3 people</b>	<b>4 people</b>
<b>50%</b>	\$25,300	\$28,900	\$32,500	\$36,100
<b>60%</b>	\$30,360	\$34,680	\$39,000	\$43,320

**MINIMUM INCOME LIMITS – 50% Income Limit = \$16,584 • 60% Income Limit = \$18,264**

**APPLICATION PROCESSING:**

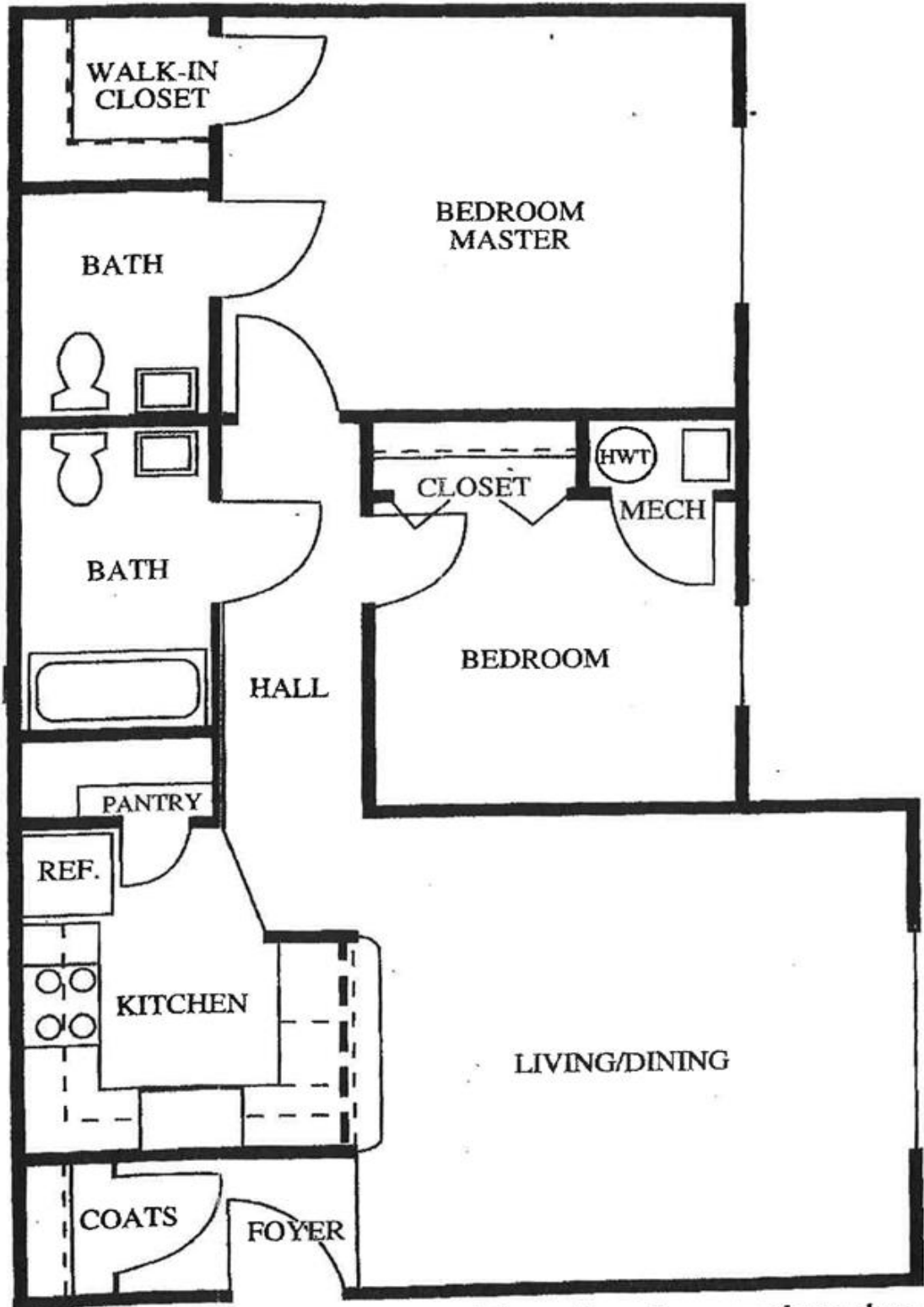
Credit history, criminal background, landlord history, and other resident selection criteria apply. Income limits, and other resident selection criteria will determine the eligibility to lease the apartment/townhome. Households comprised entirely of full time students will not qualify unless certain exceptions are met. All statements made on the rental application must be verified in writing through a third party not related to the applicant household.



Another property professionally managed by Housing Development Corporation MidAtlantic

4-6 West King Street, Suite 4 • Lancaster, PA 17603-3824 • 717-291-1911 • National Relay Service: Dial 711





*Details and dimensions shown on these plans are approximate and subject to change*