



## HIGHSPIRE SCHOOL APARTMENTS

201 Penn Street  
Highspire, PA 17034  
717-986-0266 TTY 711  
[info@hdcweb.com](mailto:info@hdcweb.com)



### **RESIDENT REQUIREMENTS:**

#### **Minimum Age 55**

3 apartments are specifically designed for individuals needing accessibility features  
All Common Areas Are Wheelchair Accessible

### **RENTAL INFORMATION:**

41 Affordable Housing, Senior Occupancy Apartments

#### **Efficiency Apartments (1 Full Bath) - \$505**

#### **1 Bedroom Apartments (1 Full Bath)**

50% Income Limit 1 BR Apartments = \$550 per month

60% Income Limit 1 BR Apartments = \$595 per month

#### **2 Bedroom Apartments (1 Full Bath)**

50% Income Limit 2 BR Apartments = \$650 per month

60% Income Limit 2 BR Apartments = \$670 per month

Section 8 vouchers accepted.

**RENT INCLUDES, HEAT, WATER, SEWER AND TRASH REMOVAL**

### **AMENITIES INCLUDE:**

- ◆ Wall-to-Wall Carpeting
- ◆ Central Air Conditioning
- ◆ Fully Equipped Kitchen
- ◆ On-Site Laundry Facilities
- ◆ Community Room with Kitchenette
- ◆ Supportive Services
- ◆ Pet Friendly
- ◆ Tobacco Free Community
- ◆ On-Site Building Management
- ◆ On-Site Maintenance
- ◆ 24-Hour Emergency Maintenance
- ◆ Tele-Entry System
- ◆ Off-Street Parking
- ◆ Sprinkler System
- ◆ Resident Activities



Another property professionally managed by Housing Development Corporation MidAtlantic

4-6 West King Street, Suite 4 • Lancaster, PA 17603-3824 • 717-291-1911 • National Relay Service: Dial 711



## **INCOME LIMITS:**

Highspire School Apartments is an affordable rental community and maximum and minimum income limits apply for all rental opportunities. The maximum income levels are based on a percentage of the Dauphin County median income by household size. When applying for residency, applicants will be required to complete forms pertaining to their household composition, gross household income (before any deductions) and your income from assets.

## **MAXIMUM INCOME LIMITS:**

	<b>1 person</b>	<b>2 people</b>	<b>3 people</b>	<b>4 people</b>
<b>50%</b>	\$23,250	\$26,550	\$29,850	\$33,150
<b>60%</b>	\$27,900	\$31,860	\$35,820	\$39,780

## **MINIMUM INCOME LIMITS:**

### **Efficiency Apartments**

Efficiency Apartment = \$12,720 per year

### **1 Bedroom Apartments**

50% Income Limit 1 BR Apartments = \$14,040 per year

60% Income Limit 1 BR Apartments = \$15,120 per year

### **2 Bedroom Apartments**

50% Income Limit 2 BR Apartments = \$16,704 per year

60% Income Limit 2 BR Apartments = \$17,184 per year

## **APPLICATION PROCESSING:**

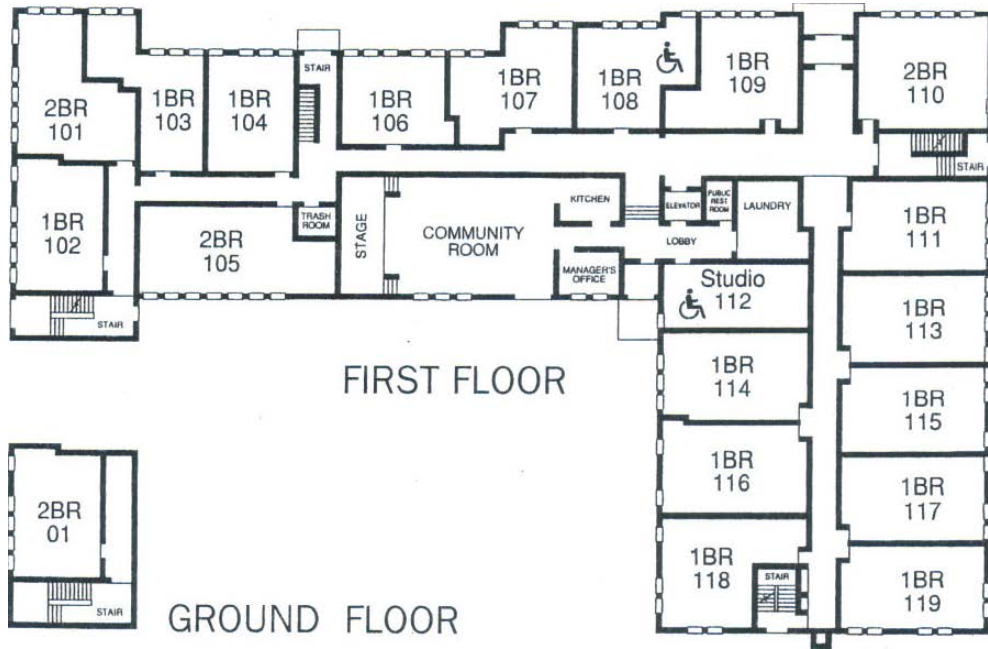
Credit history, criminal background, landlord history, and other resident selection criteria apply. Income limits, and other resident selection criteria will determine the eligibility to lease the apartment/townhome. Households comprised entirely of full time students will not qualify unless certain exceptions are met. All statements made on the rental application must be verified in writing through a third party not related to the applicant household.



Another property professionally managed by Housing Development Corporation MidAtlantic

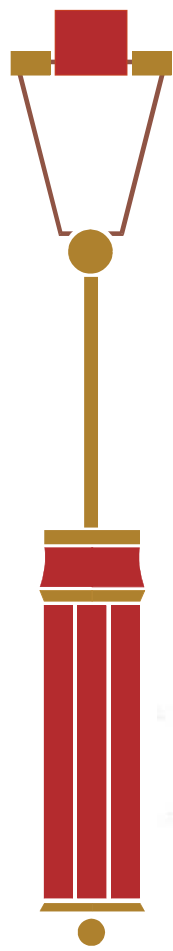
4-6 West King Street, Suite 4 • Lancaster, PA 17603-3824 • 717-291-1911 • National Relay Service: Dial 711





Highspire School Apartments  
2nd Floor

SECOND FLOOR



Another property professionally managed by Housing Development Corporation MidAtlantic  
4-6 West King Street, Suite 4 • Lancaster, PA 17603-3824 • 717-291-1911 • National Relay Service: Dial 711

