



South Side LOFTS



435 Hayes Street
Bethlehem, PA 18015
(610) 625-4414
info@hdcweb.com

RENTAL INFORMATION:

46 Affordable Housing, General Occupancy, Apartments

PREFERENCE GIVEN TO ARTISTS

6 Apartments are fully handicapped accessible (ADA)
And/or are adapted for hearing & vision impaired
Section 8 vouchers accepted

1 Bedroom Apartments (1 Full Bath, 649-703 square ft.)

20% Income Limit 1 BR Apartments = \$187 per month
50% Income Limit 1 BR Apartments = \$600 per month
60% income limit 1 BR Apartments = \$727 per month

2 Bedroom Apartments (1 Full Bath, 740-1339 square ft.)

50% Income Limit 2 BR Apartments = \$710 per month
60% income limit 2 BR Apartments = \$870 per month

3 Bedroom Apartments (2 Full Bath, 1020 square ft.)

3 Bedroom Apartments (2 Full & ½ Bath, 1292 square ft.)

50% Income Limit 3 BR Apartments = \$810 per month
60% income limit 3 BR Apartments = \$990 per month

Rent Includes: Water, Sewer and Trash Removal

AMENITIES INCLUDE:

- ◆ Wall-to-Wall Carpeting
- ◆ Vinyl Wood Plank Flooring
- ◆ Central Air Conditioning
- ◆ Geo-Thermal Heating
- ◆ Equipped Kitchen w/ Dishwasher
- ◆ On-Site Laundry Facilities
- ◆ Sprinkler System
- ◆ No Pets
- ◆ Tobacco Free Community
- ◆ Community Room w/Kitchen, Art Gallery & Artist Workspace - Hayes St.
- ◆ On-Site Professional Management
- ◆ On-Site Professional Maintenance
- ◆ 24 hour Emergency Maintenance
- ◆ On-Site Supportive Services
- ◆ Surveillance/Security System w/Cameras



Another property professionally managed by Housing Development Corporation MidAtlantic

4-6 West King Street, Suite 4 • Lancaster, PA 17603-3824 • 717-291-1911 • National Relay Service: Dial 711



INCOME LIMITS:

South Side Lofts is an affordable rental community and maximum and minimum income limits apply for all rental opportunities. The maximum income levels are based on a percentage of the Northampton County median income by household size. When applying for residency, applicants will be required to complete forms pertaining to their household composition, gross household income (before any deductions) and your income from assets.

MAXIMUM INCOME LIMITS:

	1 person	2 people	3 people	4 people	5 people	6 people
20% (1 BR Only)	\$10,460	\$11,940				
50%	\$26,150	\$29,850	\$33,600	\$37,300	\$40,300	\$43,300
60%	\$31,380	\$35,820	\$40,320	\$44,760	\$48,360	\$51,960

MINIMUM INCOME LIMITS:

1 Bedroom Apartments

20% Income Limit 1 BR Apartments = \$6,600 per year
50% Income Limit 1 BR Apartments = \$16,344 per year
60% income limit 1 BR Apartments = \$19,536 per year

2 Bedroom Apartments

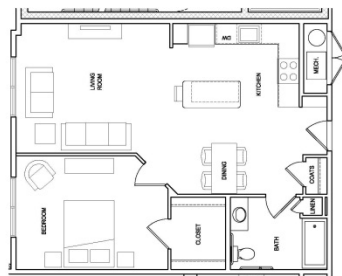
50% Income Limit 2 BR Apartments = \$19,560 per year
60% income limit 2 BR Apartments = \$23,520 per year

3 Bedroom Apartments

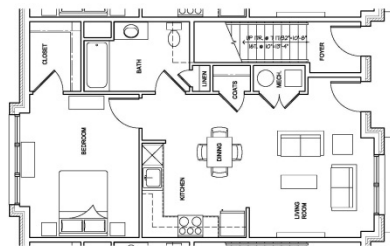
50% Income Limit 3 BR Apartments = \$22,632 per year
60% income limit 3 BR Apartments = \$27,312 per year

APPLICATION PROCESSING:

Credit history, criminal background, landlord history, and other resident selection criteria apply. Income limits, and other resident selection criteria will determine the eligibility to lease the apartment/townhome. Households comprised entirely of full time students will not qualify unless certain exceptions are met. All statements made on the rental application must be verified in writing through a third party not related to the applicant household.



SITE A TYPICAL 1BR APARTMENT



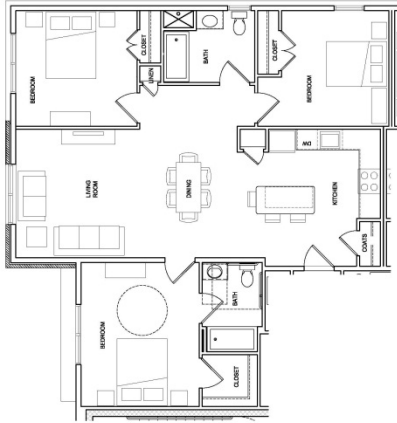
SITE B TYPICAL 1BR APARTMENT



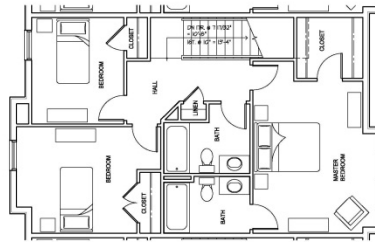
SITE A TYPICAL 2BR APARTMENT



SITE B TYPICAL 3BR TOWNHOME



SITE A TYPICAL 3BR APARTMENT



SOUTH SIDE LOFTS
SITE A: E. 5TH & HAYES ST.
SITE B: E. 5TH & ATLANTIC ST.
CITY OF BETHLEHEM, WARD 5
NORTHAMPTON COUNTY, PA.

