

MARKET SQUARE

A P A R T M E N T S

801 Penn Street
Reading, PA 19601
610-373-1212 TTY 711
info@hdcweb.com



RESIDENT REQUIREMENTS:

Minimum Age: 55

RENTAL INFORMATION:

38 Affordable Housing, Senior Occupancy Apartments

5 Apartments are specifically designed for individuals needing accessibility features

1 Bedroom Apartments (1 Full Bath, 415-600 square ft.)

(24) 50% Income Limit 1 BR Apartments = \$575 per month

(7) 60% Income Limit 1 BR Apartments = \$605 per month

2 Bedroom Apartments (1 Full Bath, 870 square ft.)

(7) 60% Income Limit 2 BR Apartments = \$685 per month

Section 8 Vouchers Accepted

RENT INCLUDES HEAT, HOT WATER, WATER, SEWER AND TRASH REMOVAL

AMENITIES INCLUDE:

- ◆ Newly Remodeled
- ◆ Wall-to-Wall Carpeting
- ◆ Air-Conditioning
- ◆ Laundry Facilities
- ◆ Fully Equipped Kitchen
- ◆ Elevator
- ◆ Residents Lounge
- ◆ Tobacco Free Community
- ◆ Resident Services
- ◆ Tele-Entry System
- ◆ On-Site Building Management
- ◆ 24-Hour Emergency Maintenance
- ◆ Sprinkler System
- ◆ Pet Friendly



Another property professionally managed by Housing Development Corporation MidAtlantic

4-6 West King Street, Suite 4 • Lancaster, PA 17603-3824 • 717-291-1911 • National Relay Service: Dial 711



INCOME LIMITS:

Market Square Apartments is an affordable rental community where maximum and minimum income limits apply for all rental opportunities. The maximum income levels are based on a percentage of the Berks County median income by household size. When applying for residency, applicants will be required to complete forms pertaining to their household composition, gross household income (before any deductions) and income from assets.

MAXIMUM INCOME LIMITS:

	1 person	2 people	3 people	4 people
50%	\$24,900	\$28,450	\$32,000	\$35,550
60%	\$29,880	\$34,140	\$38,400	\$42,660

MINIMUM INCOME LIMITS:

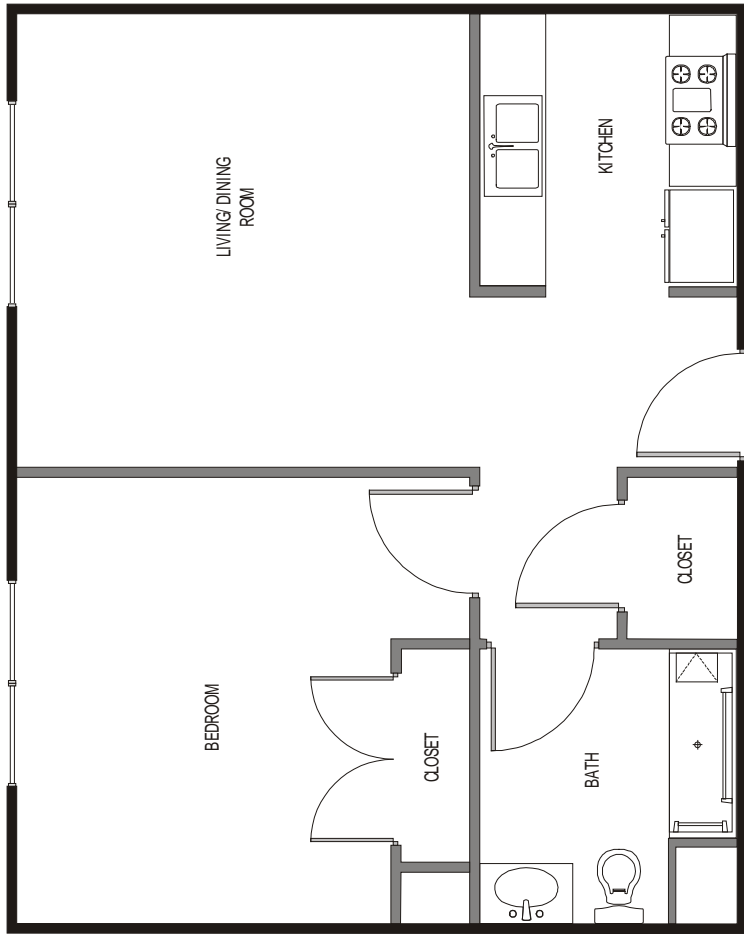
50% Income Limit 1 BR Apartments = \$14,832 per year

60% Income Limit 1 BR Apartments = \$15,552 per year

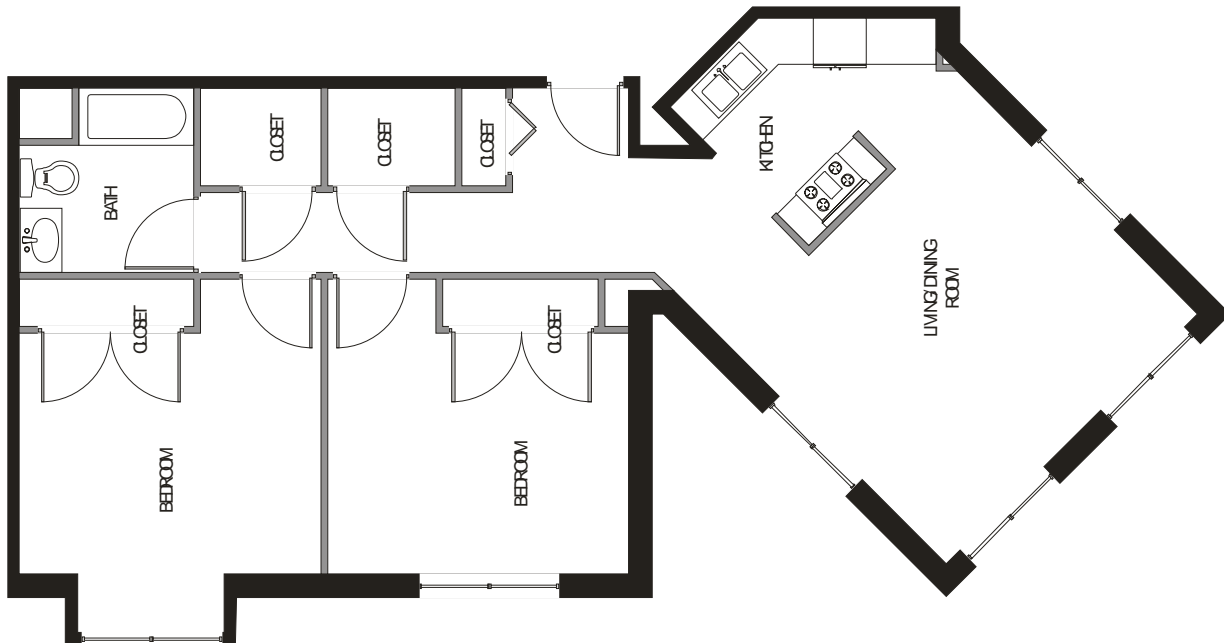
60% Income Limit 2 BR Apartments = \$17,760 per year

APPLICATION PROCESSING:

Credit history, criminal background, landlord history, and other resident selection criteria apply. Income limits, and other resident selection criteria will determine the eligibility to lease the apartment/townhome. Households comprised entirely of full time students will not qualify unless certain exceptions are met. All statements made on the rental application must be verified in writing through a third party not related to the applicant household.



Sample one-bedroom layout



Sample two-bedroom layout